



#### CASE STUDY

## Diamond Creek Netball Club

Previously exposed to changing weather conditions, the Diamond Creek netball courts are now protected by a purpose-built all-weather structure that supports year-round play, improves comfort for players and spectators, and helps grow community participation in the sport.



**Brief**

Diamond Creek Netball Association needed a shade solution that would protect its courts from the elements and enable more reliable use throughout the year. Supporting a busy local sporting community, the project was an important investment in participation, performance and the long-term growth of netball in the area.

The brief called for a structure that could fully cover two competition-standard courts while maintaining compliant netball clearances and high quality lighting for training and matches. Just as importantly, the facility needed to feel open, bright and welcoming rather than enclosed, while complementing the scale and character of the existing club building.

Construction also required a careful approach. The new structure had to be built over existing acrylic court surfaces without causing damage, while minimising disruption and allowing surrounding courts to continue operating where possible. The result needed to combine robust engineering, visual quality and long-term durability in a community setting.

**Solution**

The design response centred on a large clear-span skillion roof that complements the form of the existing club building while delivering the 8-metre clearance required across both courts. This created a competition-ready facility with the scale and openness needed for local and regional play.

Wonderglas skylights and translucent façade infill were integrated to increase protection from wind-blown rain and UV exposure while maintaining bright, natural light across the courts. A soffit was also incorporated to improve the visual finish and support bird-proofing, helping the structure perform well over time with minimal upkeep. Roof-mounted LED lighting was designed to competition standard in accordance with AS2560.2:2021, supporting safe, high visibility play into the evening.

Construction was carefully staged over the existing courts, with a methodology that protected the acrylic playing surface throughout installation and allowed play to resume immediately on completion. Locally fabricated steelwork, a three-stage powder coating system and independent third-party weld testing further reinforced build quality, durability and confidence in the finished outcome.

<b>Client</b>	Nillumbik Shire Council
<b>Location</b>	Diamond Creek, VIC
<b>Structure</b>	Skillion Roof Canopy
<b>Area Covered</b>	Netball Courts
<b>Size</b>	1,500 sqm
<b>Finishes</b>	Powder-Coated Steelwork, Dulux Ironstone
<b>Materials</b>	Colorbond



### Outcome

The completed structure has transformed the courts into a more resilient and versatile community sporting asset. Players, spectators and officials now benefit from all-weather protection, improved comfort and better playing conditions, allowing training and matches to continue more consistently across the year.

With over 1,500 sqm of covered court space, the facility supports two competition-standard courts and helps accommodate a high volume of weekly participation. The result strengthens the club's ability to support more players, more teams and more opportunities for competition, connection and community activity.

Beyond performance, the project delivers lasting value through durability, low maintenance and a design that integrates confidently with its surroundings. It is a practical investment in local sport that will support local participation for years to come.





The skillion roof responds to the form of the adjoining club building, while soffits, skylights and translucent infill improve presentation, birdproofing and weather protection without compromising daylight across the courts.

WATCH VIDEO

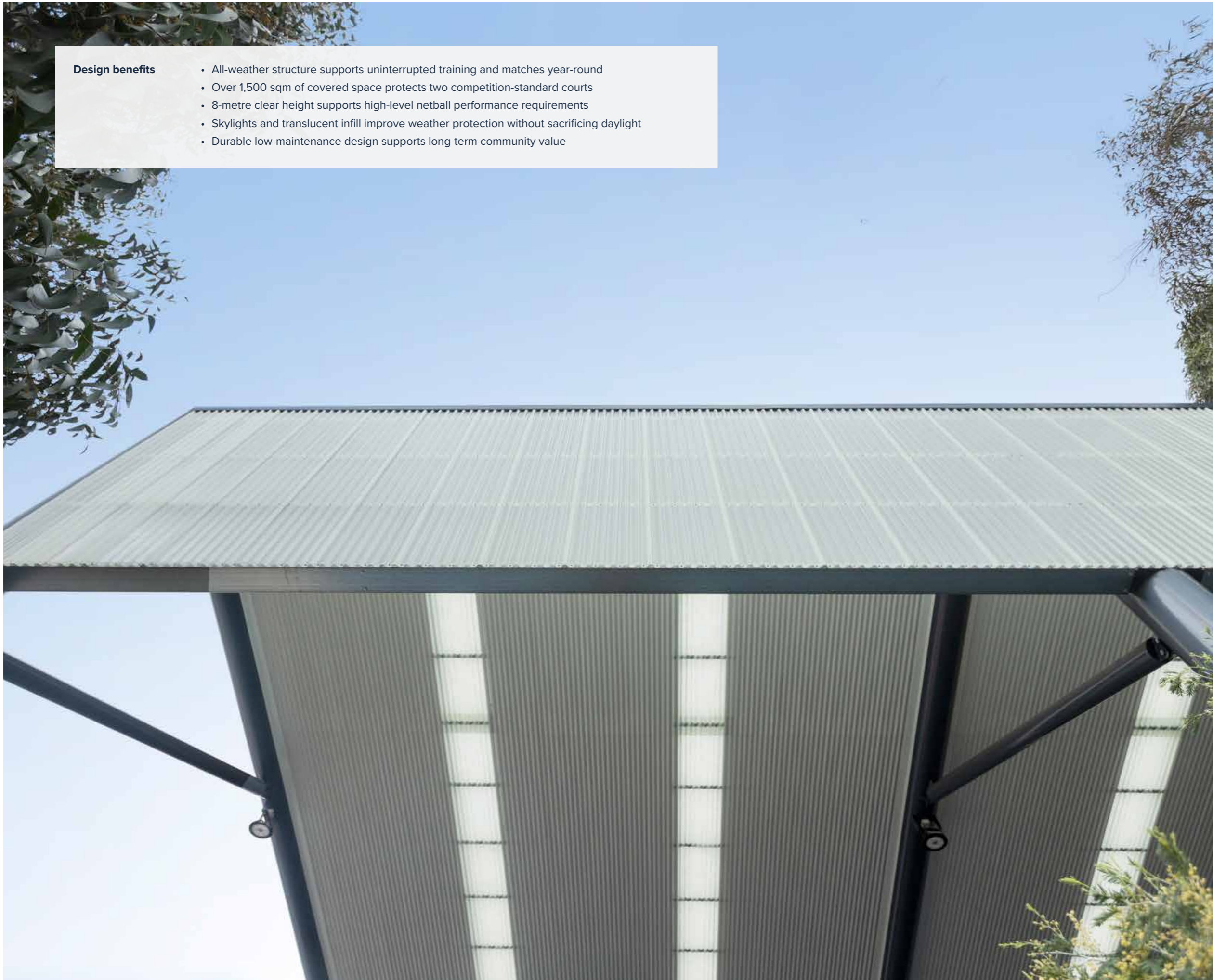


**This project demanded more than a simple cover structure. It required a build approach that could be delivered safely over existing courts without damage, while maintaining the performance standards needed for competition netball.**



**Design benefits**

- All-weather structure supports uninterrupted training and matches year-round
- Over 1,500 sqm of covered space protects two competition-standard courts
- 8-metre clear height supports high-level netball performance requirements
- Skylights and translucent infill improve weather protection without sacrificing daylight
- Durable low-maintenance design supports long-term community value



---

**Next steps**

Have a project in mind?  
[Click here](#) to book an appointment and start a conversation with the Greenline team.